

WORK and *PLAY*

BY FOREST RIVER, INC.

**HEAVY DUTY INNOVATED FRP (FIBERGLASS REINFORCED PLYWOOD)
TRAVEL TRAILERS & FIFTH WHEELS**



CARGO CARRIERS WITH LIVING QUARTERS

The EC features a 54" X 74" Murphy bed. It also includes a 32" X 34" shower with a curtain. This model includes a 13ft awning, AM/FM/CD stereo, 6 cu. ft refrigerator, microwave oven and a 13,500 roof air conditioner.



18EC

TRAVEL TRAILER

HIGHLIGHTED FEATURES

The 18EC has 4400 lb. EZ lube axles with Goodyear Marathon Radial tires, twin 20 lb. propane tanks along with an 80 gallon fresh water tank. This model has a 7 ft. interior height with 100 inch interior width and a cargo length of 15 ft. 6 inches. With a hitch weight of 912 lbs. and a total trailer weight of 5276 lbs., you will have up to 4315 lbs. of carrying capacity.

WORK-N-PLAY

LK

TRAVEL TRAILER

HIGHLIGHTED FEATURES

The LK has 6000 lb EZ lube axles with Goodyear Marathon Radial tires (this allows for a heavier cargo-carrying capacity than most of the competitors). It also features twin 30lb propane tanks along with an 80 gallon fresh water tank. Cargo lengths start with 12 ft and go to 23 ft depending upon the model size selected.



The kitchen features a double well sink, 3 cu ft refrigerator, 3 burner cook top, base cabinets and over head storage. The LK shower is a 26" x 38". This model has 7 ft interior height and 100 inch interior width.



CARGO CARRIERS WITH LIVING QUARTERS

The WA private bedroom features a queen size walk around bed with under bed storage. This model has a full pass through storage compartment, with access from either side. It also features a 35" X 35" radius shower with a sliding glass door.



WORK-AND-PLAY

WA

TRAVEL TRAILER

HIGHLIGHTED FEATURES

The WA has 6000 lb EZ lube axles with Goodyear Marathon Radial tires (this allows for a heavier cargo-carrying capacity than most of our competitors). It also features twin 30lb propane tanks along with an 80 gallon fresh water tank. The WA has a 7 ft interior height and 100 inch interior width.

The WR private bedroom features a queen size walk around bed with under bed storage. It also has a full pass through storage compartment, with access from either side. This model features a 35" X 35" radius shower with a sliding glass door, along with a 79" dinette. The WR has a partition wall separating the cargo area from the living quarters, leaving 10'5" dedicated to your toys.



WORK-AND-PLAY

WR

TRAVEL TRAILER

HIGHLIGHTED FEATURES

The WR has 6000 lb EZ lube axles with Goodyear Marathon Radial tires (this allows for a heavier cargo carrying-capacity than most of our competitors). It also features twin 30lb propane tanks and an 80 gallon fresh water tank. The WR has a 7 foot interior height and 100 inch interior width.

CARGO CARRIERS WITH LIVING QUARTERS

CARGO CARRIERS WITH LIVING QUARTERS



The WRS private bedroom features a queen size walk around bed with under bed storage. This model has a full pass-through storage compartment, with access from either side. It also features a 35" X 35" radius shower with sliding glass doors. The living quarters features a door-side slide-out that contains a 68" flip couch, as well as, a sliding glass door that keeps your toys out of your living room.



WORK-AND-PLAY WRS TRAVEL TRAILER

HIGHLIGHTED FEATURES

The WRS has 6000 lb EZ lube axles with Goodyear Marathon Radial tires (this allows for a heavier cargo-carrying capacity than most of our competitors). It also features twin 30lb propane tanks along with 80 gallon fresh water tank. The WRS has a 7 ft interior height and 100 inch interior width.





The FLA private bedroom features a queen size bed, 2 large closets with overhead cabinets. The bathroom includes a 35" X 35" radius shower with sliding glass doors. The FLA has a 7 ft interior height and 100 inch interior width. Cargo lengths start with 13' curbside/10' roadside and go up to 17' curbside/ 14' roadside depending upon model size selected

WORK-AND-PLAY

FLA

TRAVEL TRAILER

HIGHLIGHTED FEATURES

The FLA features 6000 lb EZ lube axles with Good-year Marathon Radial tires (this allows for a heavier cargo-carrying capacity than most of our competitors). It also features twin 30lb propane tanks along with an 80 gallon fresh water tank



CARGO CARRIERS WITH LIVING QUARTERS

The FK features a queen size mattress in the upper deck, 2 wardrobes, a large mirrored headboard with shelving and reading lights. This model has a 35" X 35" radius shower with sliding glass doors, along with a 79" dinette in the living quarters. The FK also has a 7ft 4 inch interior height and 100 inch interior width.



WORK-AND-PLAY

FK

FIFTH WHEEL

HIGHLIGHTED FEATURES

The tandem axle FK models have 7000lb EZ lube axles with LT radial tires, while the triple axle FK models have 6000 lb EZ lube axles with Goodyear Marathon Radial tires, twin 30lb propane tanks along with an 80 gallon fresh water tank. The cargo lengths start with 13' and go up to 23' depending upon the model selected.

WORK-AND-PLAY

RLS

FIFTH WHEEL

CARGO CARRIERS WITH LIVING QUARTERS



The RLS features a 76" flip couch in the side slide, a queen size mattress in the upper deck, 2 wardrobes, a large mirrored headboard with shelving and reading lights. The RLS has a 35" X 35" radius shower with sliding glass doors, 7ft 4 inch interior height and 100 inch interior width. Cargo lengths start with 10'1" and go up to 20'1" depending upon model size selected.



WORK-AND-PLAY SPECIFICATIONS

Model #	FW/TT	Cargo Length	Carry Capacity	Base Weight (lbs.)	Hitch Weight (lbs.)	Axle Weight (lbs.)	No.AX	GVWR (lbs.)	Box Length	Total Length	Water Cap	Black Gray	Hitch Size
WPT18EC	TT	15'6"	4377	5276	912	4364	2	9712	19'7"	24'2"	80 Gal	38/26	2 5/16"
WPT20LK	TT	12'-9"	5800	5911	844	4963	2	12844	20'-2"	24'-8"	80 Gal	38/26	2 5/16"
WPT22LK	TT	14'-9"	5800	6264	996	5266	2	12996	22'-2"	26'-8"	80 Gal	38/26	2 5/16"
WPT24LK	TT	16'-9"	5800	6617	1148	5569	2	13148	24'-2"	28'-8"	80 Gal	38/26	2 5/16"
WPT26LK	TT	18'-9"	5800	6970	1112	5872	2	13100	26'-2"	30'-8"	80 Gal	38/26	2 5/16"
WPT28LK	TT	21'-9"	5800	7218	1084	6134	2	13084	31'9"	34'8"	80 Gal	38/26	2 5/16"
WPT30LK	TT	23'9"	6311	7564	1430	6134	2	13230	33'2"	36'	80 Gal	38/26	2 5/16"
WPT26FLA	TT	13'CS/10'RS	5481	7585	1125	6460	2	13125	26'-2"	30'-8"	80 Gal	38/38	2 5/16"
WPT28FLA	TT	15'CS/12'RS	4245	8260	1146	7114	2	13063	31'9"	34'8"	80 Gal	38/38	2 5/16"
WPT30FLA	TT	17'CS/14'RS	4827	8759	1063	7696	2	13146	33'2"	36'	80 Gal	38/38	2 5/16"
WPT30WA	TT	18'4CS/10'RS	4439	8626	1124	7502	2	13124	33'2"	36'	80 Gal	38/38	2 5/16"
WPT30WR	TT	10'-5"	4096	8919	1074	7845	2	13074	33'2"	36'	80 Gal	38/38	2 5/16"
WPT30WRS	TT	10'1"	4248	8861	1168	7693	2	13168	33'2"	36'	80 Gal	38/38	2 5/16"
WPF34FK	FW/GN	13'-9"	6000	10405	2798	7607	2	16798	34'-8"	35'-8"	80 Gal	38/38	NA
WPF38FK	FW/GN	17'-9"	5463	11406	2928	8478	2	16928	38'-8"	39'-8"	80 Gal	38/38	NA
WPF40FK	FW/GN	19'-8"	7000	12820	3079	9741	3	24079	42'8"	42'8"	80 Gal	38/38	NA
WPF44FK	FW/GN	23'-9"	7000	13645	3149	10496	3	24149	46'6"	46'6"	80 Gal	38/38	NA
WPF34RLS	FW/GN	10'1"	5500	10551	2783	7768	2	16783	34'-8"	35'-8"	80 Gal	38/38	NA
WPF38RLS	FW/GN	14'1"	5225	11403	2687	8716	2	16687	38'-8"	39'-8"	80 Gal	38/38	NA
WPF40RLS	FW/GN	16'1"	7000	12354	2608	9746	3	23608	42'8"	42'8"	80 Gal	38/38	NA
WPF44RLS	FW/GN	20'1"	7000	13540	2906	10784	3	23836	46'6"	46'6"	80 Gal	38/38	NA

ALL WEIGHTS AND LENGTHS ARE APPROXIMATE DEPENDING ON HOW UNIT IS EQUIPPED.

TRAVEL TRAILERS FROM GROUND TO TOP OF A/C ARE 10' 10" | FIFTH WHEELS FROM GROUND TO TOP OF A/C ARE 11' 6"

Base Weight: The weight of the unit with no fluids, cargo, optional equipment or accessories.

Carry Capacity: The amount of weight available for all fluids, cargo, optional equipment or accessories

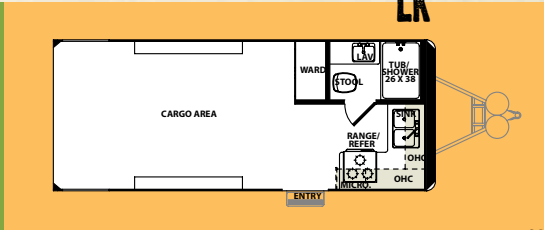
GVWR (Gross Vehicle Weight Rating): The maximum permissible weight of the unit including the Base Weight plus all fluids, occupants, cargo, optional equipment and accessories. For safety and product performance, do not exceed the GVWR.

WORK-AND-PLAY FLOORPLANS

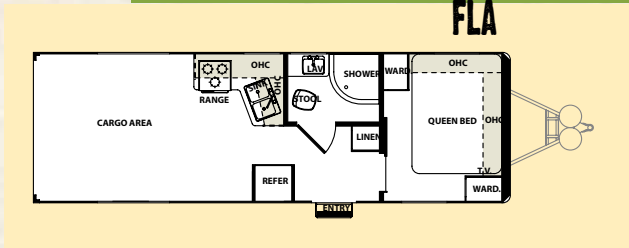
EC



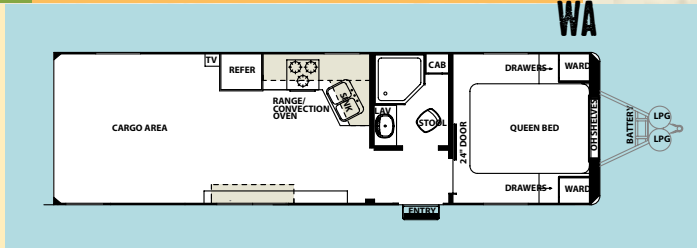
LK



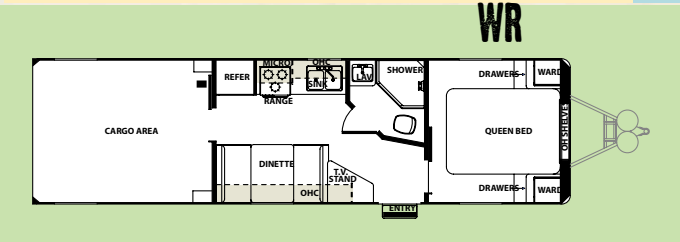
FLA



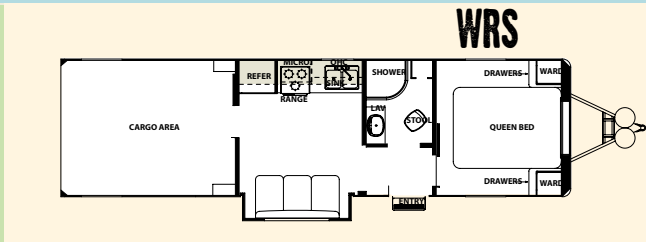
WA



WR



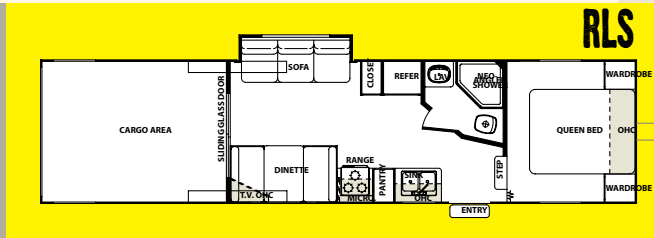
WRS



FK



RLS



HIGHLIGHTED FEATURES

- Heavy duty steel "Cargo style" frame (Most models have a 5,000 lb. carry capacity)
- FRP (Fiberglass Reinforced Plywood) walls with exterior gel coat finish
- One piece aluminum roof
- Heavy duty steel re-enforced ramp door (rated for up to 5,000 lb. rolling weight)
- 4 1/4" steel c-channel roof trusses
- Ultra durable spray on floor covering on cargo area floor
- Awning
- 15,000 BTU air conditioner (13,500 BTU in 18EC)
- Microwave
- 6CF Refrigerator (LK models have 3CF)



Forest River, Inc. encourages our customers to purchase their Forest River products from a local dealership whenever possible for the following reasons:

It is the goal of Forest River, Inc. that all of our RV owners fully enjoy the RV experience and that customer satisfaction meets or exceeds their expectations!

- 1) Forest River, Inc. dealers are independently owned and operated businesses so priority service and scheduling is at their discretion and is often provided to customers that purchased their unit at that dealership.
- 2) Purchasing locally allows customers to establish meaningful relationships with a dealer, enhancing the RV experience through assistance with product questions, user tips or RV regulations for your state or country, and much more!
- 3) Canadian customers must meet requirements to bring an RV purchased out of the country to their home. These requirements may involve additional inspections and certifications, taxes and fees. Your local Canadian Dealer is a professional at meeting these requirements.
- 4) Scheduling timely warranty repairs and adjustments through a local dealership provides far greater flexibility and convenience to you, the customer!



PRE-DELIVERY INSPECTION FACILITY

20,000 square feet of quality assurance. The bare essentials for a premium product. This state-of-the-art facility gives immediate daily feedback to production for quality assurance in every unit built.

Travel Easy™ Roadside Assistance

RVing is easier with Work and Play's Travel Easy™ Roadside Assistance provided FREE the first year of ownership to those who purchase a new Work and Play. Administered by Coachnet, this service provides you with 24/7 operational technical and emergency road service coverage. Also included is towing, fuel delivery, jump starts, lock out service, tire changes, mobile mechanic and unlimited technical assistance. Anywhere. Anytime. Travel Easy™ is the security of knowing that help is an easy phone call away.

To learn more about Work and Play and our products and see how Work and Play is making the easy life easier, visit www.forestriverinc.com/workandplay



YOUR DEALER



Learn More

Scan this barcode using a QR Reader on your smart phone to learn more about Forest River.



A Berkshire Hathaway company.

All information contained in this brochure is believed to be accurate at the time of publication. However, during the model year, it may be necessary to make revisions and Work and Play reserves the right to make all such changes without notice, including prices, colors materials, equipment and specifications as well as the addition of new models and the discontinuance of models shown in this brochure. Therefore, please consult with your Work and Play dealer and confirm the existence of any materials, design or specifications that are material to your purchase decision. Litho. U.S.A FOR 0903

3010 College Avenue, Goshen, IN 46528 www.forestriverinc.com 574.533.5934

© Copyright 2011 Work and Play, a division of Forest River Inc. All rights reserved.